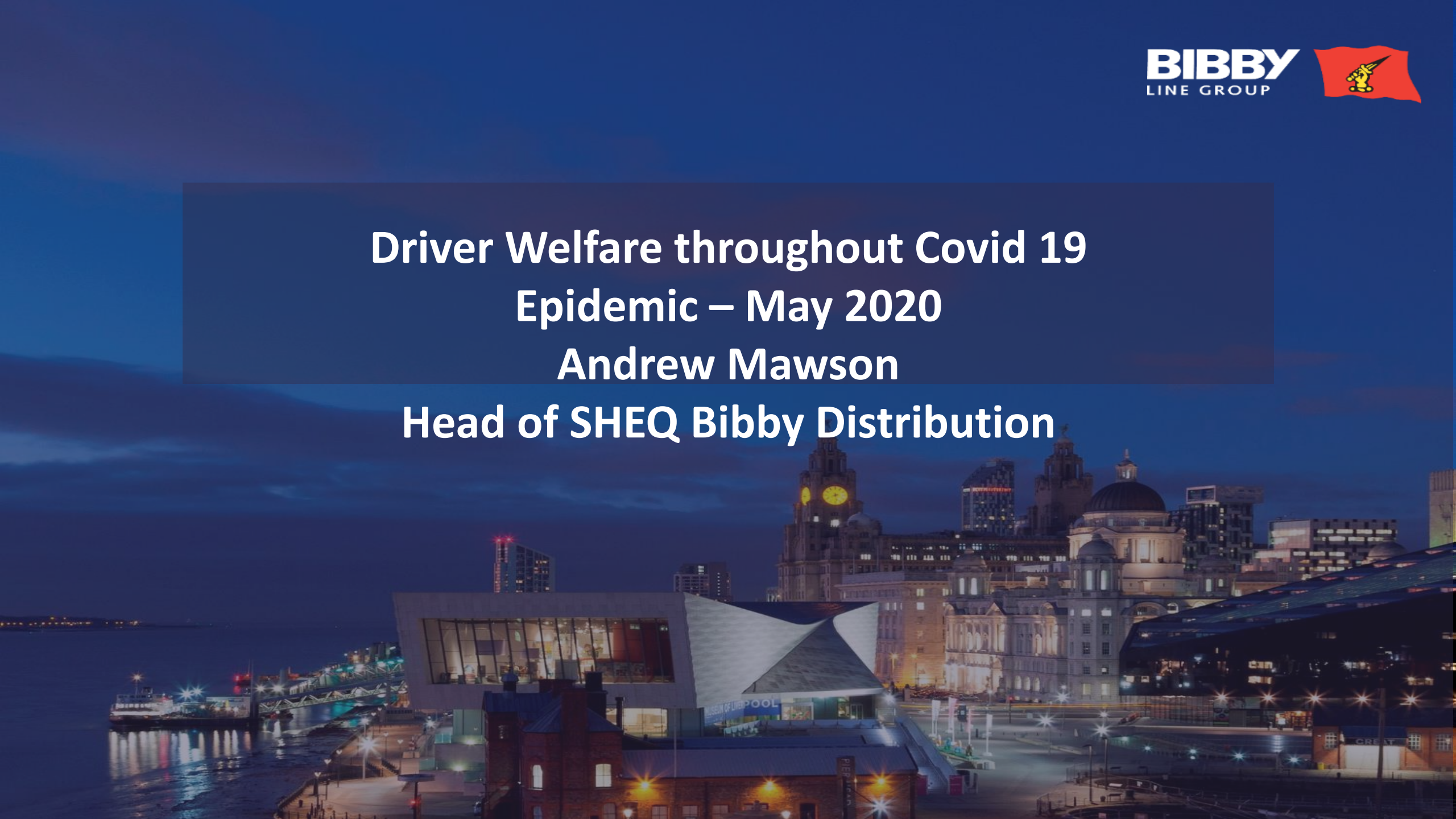




**Driver Welfare throughout Covid 19
Epidemic – May 2020
Andrew Mawson
Head of SHEQ Bibby Distribution**



Overview

- Driver Welfare – The Risks and Challenges
- What we've learnt from the epidemic
- Business/Wider View
- Future Plans

Risks and Challenges

- Initial planning – 28th February 2020
- Risk Assessment
- Safe System of Work
- Reducing Contact with Others/Reducing Paper
- Mental Health and Wellbeing
- Toilets & Welfare/ Waiting locations and Rest areas
- Service stations and availability of food and drink

What have we learnt?

- To make welfare facilities fit for purpose
- To improve control measures for Mental Health and wellbeing, welfare, PPE, Cleaning Equipment in Risk Assessments
- Clean areas for equipment/uniform in vehicles/overnight bags
- Pre start/post shift Cleaning of vehicle interiors.

Wider View & Future Plans

- Lack of safe parking and welfare provisions (Welfare Regs)
- Parking in a layby v avoiding the virus....
- Valuing a diminishing talent pool..
- Maintaining availability of PPE, Cleaning Materials.
- IOSH Logistics and Retail Group to strive for improvements in Mental Health, Wellbeing and welfare for drivers