

Update and Leader's Perspective

Bev Messinger
Chief Executive



Leadership journey



Charitable aims

Our main aim is to ***improve health and safety at work***, and to ***support health and safety professionals*** who are dedicated to cutting down accidents and ill health at work.

Our charitable aims

- To promote ways to improve occupational health and safety.
- To help IOSH members and the public exchange information and ideas.
- To maintain and improve the professional status of IOSH members and people involved in improving health and safety at work.

World's largest professional body for OSH

Where are we?



Top ten countries

World's largest professional body for OSH

Where are we?



We are in over 120 countries

World's largest professional body for OSH

Where are we?

- Proportion of the membership:
 - UK/Ireland – 83%
 - Middle East – 3.5%
 - India – 1.7%
 - Asia Pacific – 2.3%
- Main areas of growth:
 - United Arab Emirates
 - Qatar
 - Singapore
 - India

Global figures

2014
Estimated
2.32 million
deaths



20%



2017
Estimated
2.78 million
deaths
**Equivalent
to almost 3 x
population
of Birmingham**

2014
Occupational
cancer
666,000



11%



2017
Occupational
cancer
742,000
**Equivalent to
one person
every
40 seconds**

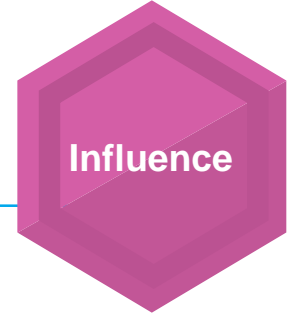
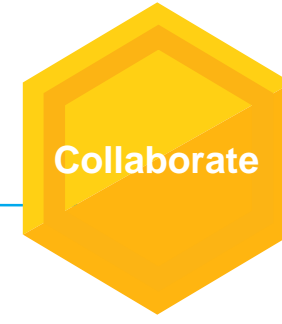
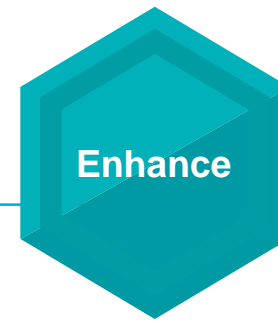
How can we make a difference - WORK 2022



**A safe and
healthy world
of work**

shaping the
future of
safety and
health

WORK 2022



Non-health related fatalities



Occupational cancer



Well-being



Rehabilitation/ return to work



Musculoskeletal disorders



Sustainability and human capital

Strategy progress so far... Years 1 and 2



WORK 2022 year 3

Level 6 diploma

Membership Standards

Enhance

Enhanced membership benefits

Future Leaders – pipeline

Engage with business-
Healthy Profit 2.0

Sustainability
Human Capital

Collaborate

Building new relationships

Enhanced support for Networks

Global Working pilots

Implement R&D strategy

Influence

Blueprint Phase 2

Policy makers & regulators

WORK 2022 – members make it work

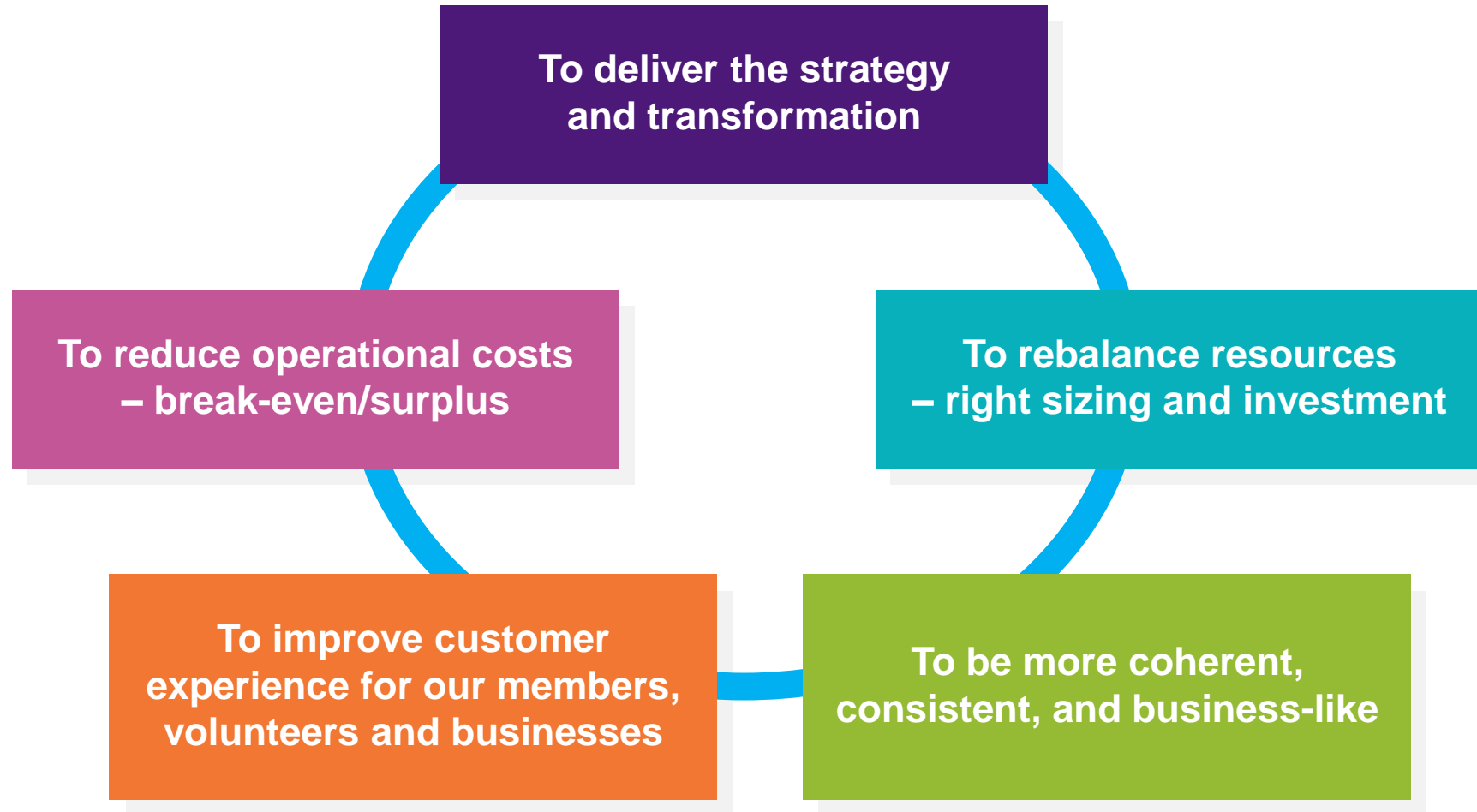
- Members are essential to making WORK 2022 happen
 - Impact at every level Technical – Specialist - Strategic
 - Business impact influencing your own businesses – embedding OSH in company culture
 - Safety and Health for Business – support our new Qualification
 - Future pipeline – how much time do you spend in colleges and schools?
 - Role modelling/mentoring – developing our future leaders
 - What do you need from us?
 - How do we make this relevant to you?

Transforming Together Programme

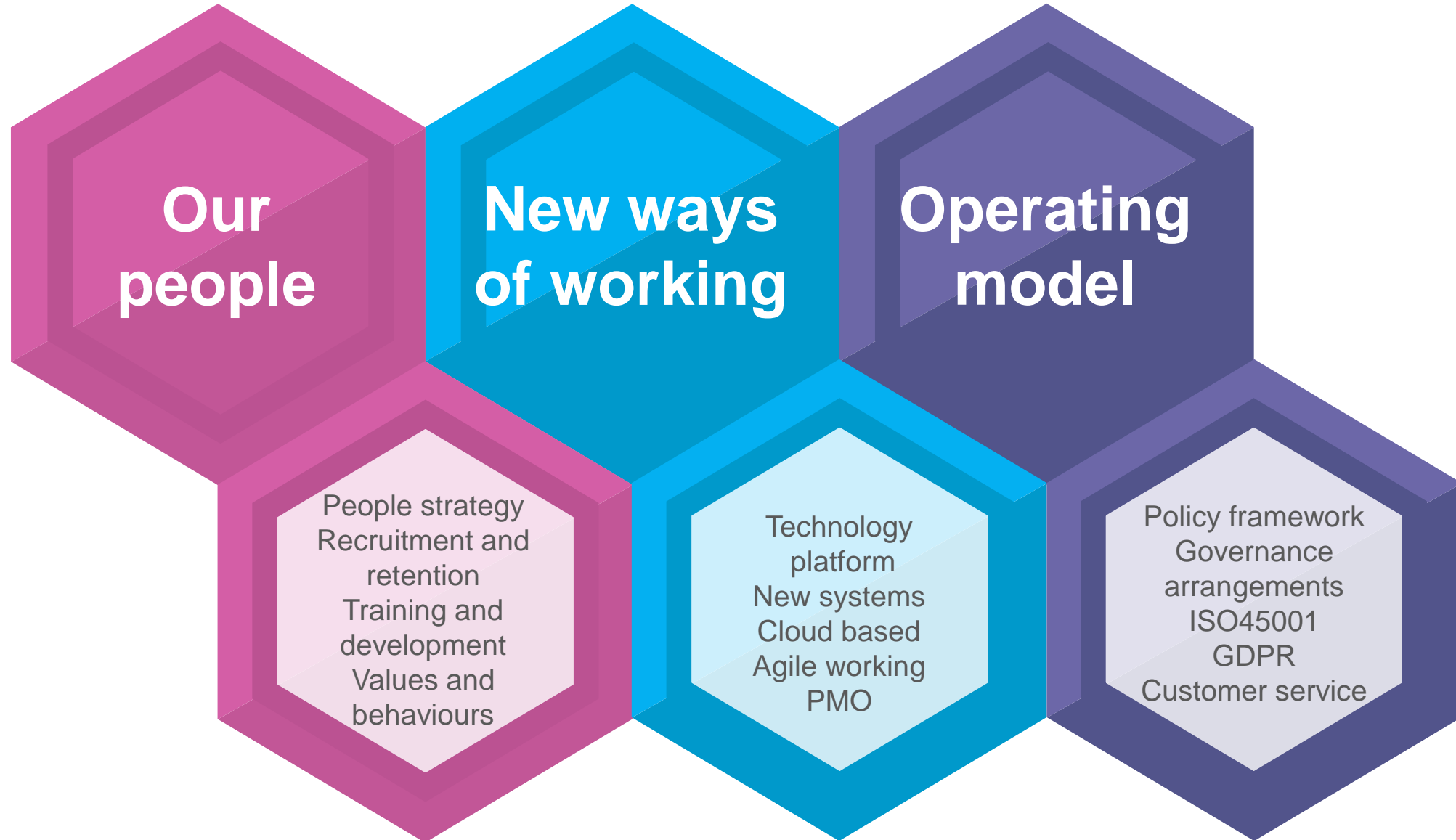
A more agile, modern, and flexible organisation that's easier to do business with

Deliver WORK 2022

Why we needed to change



TTP highlights



What does success look like?



WORK 2022 and leadership



Thank you
for listening