



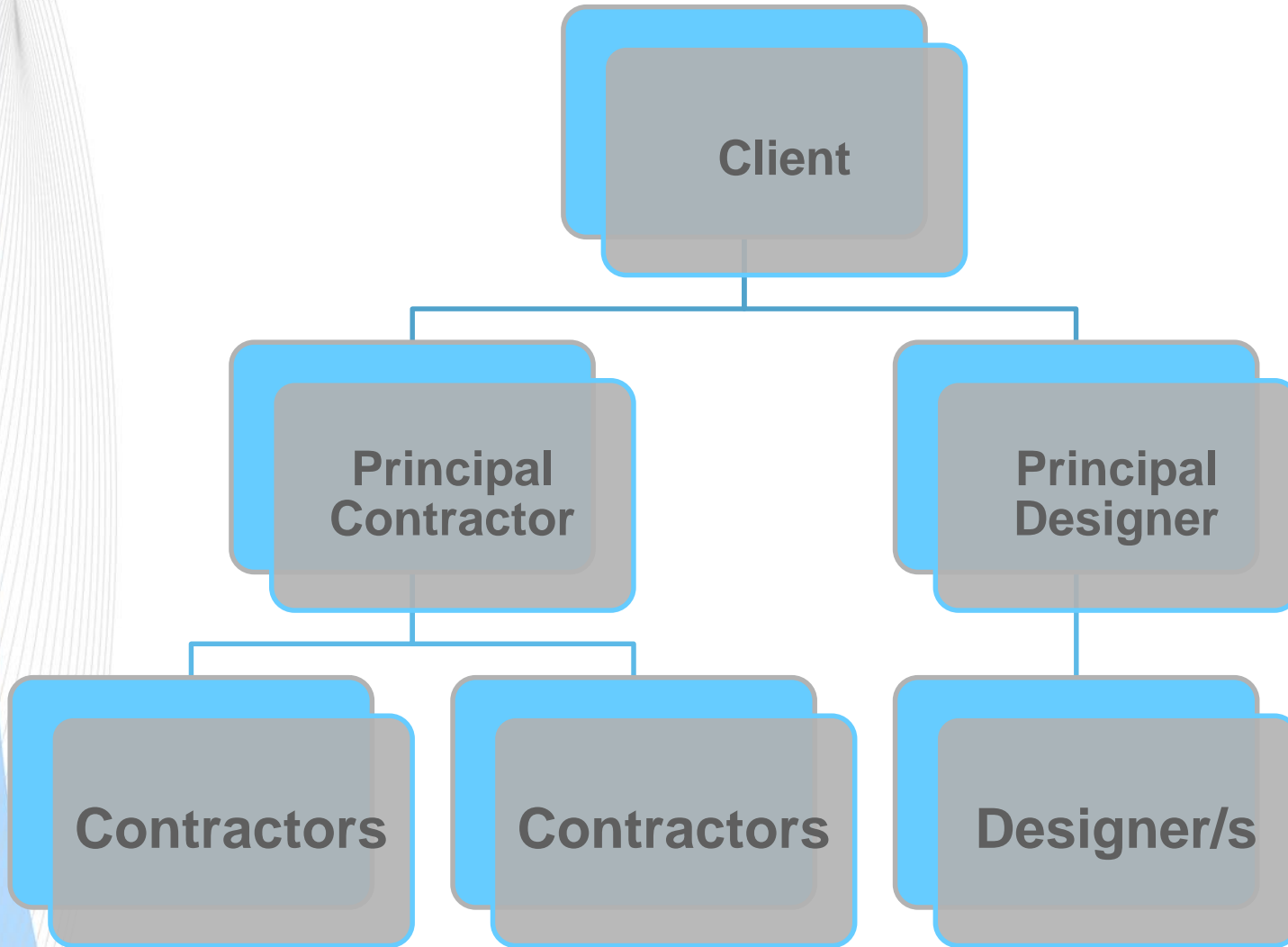
**Construction Design
Management
Webinar**

**Jason Williams
CDM Manager
Crawford & Company**

Where are we at the moment?

- 6th April 2015 UK Mainland
- August 2016 Northern Ireland
- No ACOP – Just Guidance
- Notifiable Projects
- Over 20 prosecutions and over 2500 breaches of CDM 2015 within the last 12 months
- Massive Fines
- HSE Fines – Fees for intervention

CDM Hierarchy



Duty Holders - Client

- Appoint Principal Contractor
- Appoint Principal Designer on multiple contractor projects
- Provide Pre-construction information

Duty Holder - Principal Designer

- Possess knowledge, experience and qualifications to undertake the PD role.
- Provide Pre-Construction Information (PCI) to the Principal Contractor, as they can create the Construction Phase Plan (CPP).
- Monitor the Health and Safety element of the project and advise the Client.
- Provide the Health and Safety file for the Client upon project completion.

Duty Holder - Principal Contractor

- In control of the Construction Phase of the project, with support from the Principal Designer on CDM and Health and Safety matters.
- Maintains a safe secure construction site
- Communicates effectively with all duty holders.
- Promotes pro-active safety culture
- Collates information and documentation for the Principal Designer to create the Health & Safety File.

Duty Holder - Designer

- Provide information to assist the project
- Assist in designing out hazards and risk
- Promote compliance
- Communicates effectively with all duty holders.
- Demonstrate understanding of CDM 2015
- Assist in collation of the Health and Safety File.

Duty Holder - Contractor

- Previously known as sub contractors
- Engaging a Contractor creates the second contractor phase which requires a Principal Designer being appointed by the Client.
- Adopts and maintains the safe working practices of the Principal Contractor and the Project Management Team
- Communicates effectively with all duty holders.

More than One Contractor

- Anybody that is not directly employed by the Principal Contractor via PAYE, are classed as a secondary contractor.
- On these occasions a Principal Designer must be appointed.
- The CDM Unit acts as Principal Designer in these cases.

Health & Safety File

- H&S information about equipment provided for cleaning or maintaining the structure
- The nature, location and markings of significant services.
- Information and as built drawings of the building, its plant and equipment. (e.g. the means of safe access and egress for window cleaning, maintenance etc., also fire drawings).

HSE 3-5 Year vision for Construction.

Ensuring the Construction (Design and Management) Regulations (CDM 2015) are understood and a proportionate approach is taken toward compliance by collaborating with construction clients, principal designers and designers and working with other health and safety regulators (e.g. Office for Nuclear Regulation and Office of Rail and Road) where relevant;

- directing inspection and enforcement at those failing to manage and control risks, focusing on health risks, refurbishment activity, and licensed asbestos removal;
- visiting targeted duty holders to encourage self-assessment and progressive development of their health risk management arrangements using leading indicators in the Construction Health Risks Toolkit.