

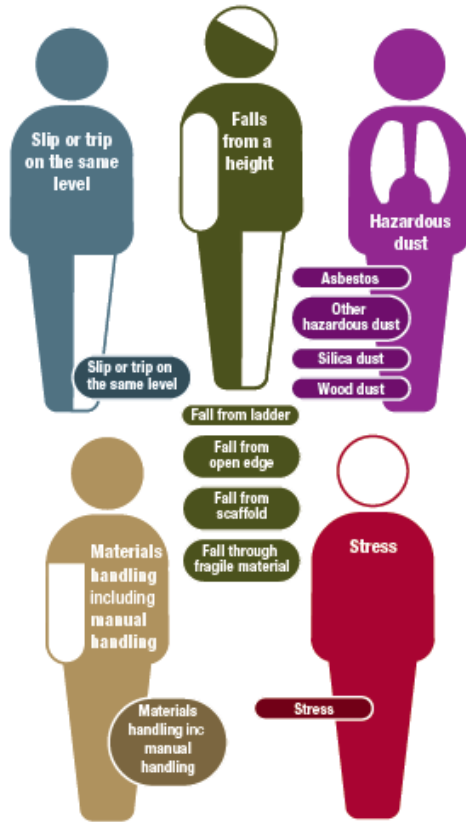
A work in progress



Risk in CONSTRUCTION

PREVENTABLE RISK EXPOSURE

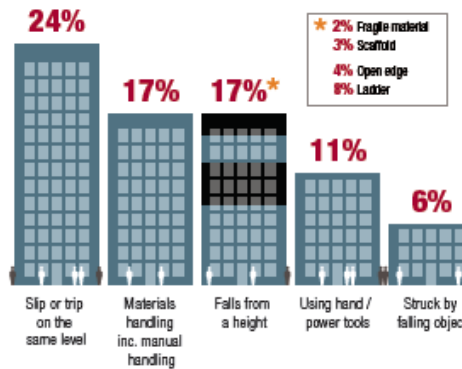
Focus on **5**



IMMEDIATE CONSEQUENCES

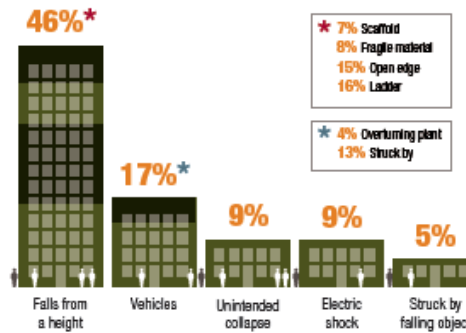
Risk profile injury **TOP 5**

Using a 1000 sample of the RIDDOR data (2011-2017)



Risk profile fatality **TOP 5**

Using 5 year RIDDOR data (2012/13-2016/17) - 196 deaths



DELAYED CONSEQUENCES

Ill health

Each year around **80 000** construction workers in Great Britain suffer from an illness they believe was caused or made worse by their work

Sources: Labour Force Survey, 2014/15-2016/17

