



East Anglia Branch Visit

East Anglia Branch

IOSH Presidential Team



Craig Foyle CFIOSH

President Elect



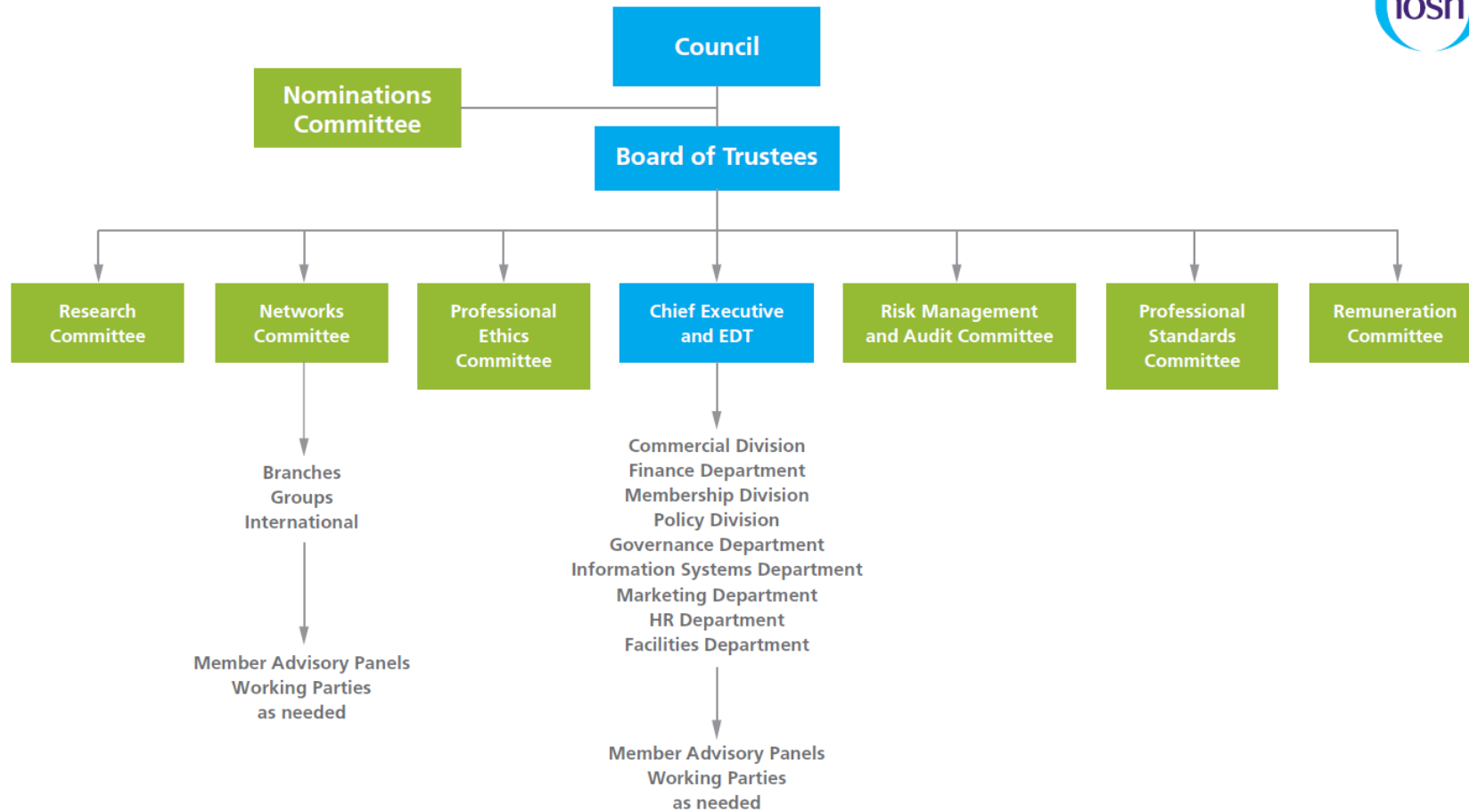


Introduction

- Introduction
 - Role of Council / Presidential Team
 - New strategy
 - CPD
 - Volunteering
- 
- 

IOSH Structure

IOSH structure



Role of council

- Advice and guidance
- Strategic, professional and policy issues

- 36 members of council
- 27 or more must be corporate members

- Meet twice a year (3 day commitment)
- Optional extras

- Your council needs YOU
- 12 members will be elected
- Deadline 26 May

Role of presidential team



- Ensure council fulfils its role / opportunity to debate
- Represent council views on board of trustees (BoT)
- Regular contact with chief executive and chair of BoT
- Act as an ambassador for IOSH
- 9 members (president, president elect, immediate past president and six vice presidents)
- 20-25+ days (President)
- 10-15 day commitment (PE / IPP / VP)
- 2 x VP / 1 x PE annually – are you interested?

Strategy

- New strategy – April 2017



CPD

- CPD is important and valued
 - Regular communication is needed
 - Online platform is effective – but room for improvement
 - Guidance and support is helpful
- 
- 

Volunteering

You **CAN** make a difference

- Council / board of trustees
- Nominations committee / standing committees
- Member advisory panels
- Audits, peer review interviews, IPD portfolio review
- Branches
- Groups



Contact me

Craig Foyle

President Elect

Tel: 07890 942147

Email: craig.foyle@iosh.co.uk





The heart of health and safety